



The EPS-30 Endoscopy Positioners provide a safe, ergonomic, and versatile platform for endoscopic and a variety of other procedures performed in lateral, prone, or supine. The durable EPS-30 maximizes patient comfort and safety by decreasing shoulder, cervical, and lumbar pressure. The EPS-30 maintains spine and airway alignment and reduces risks of complications including corneal abrasions and aspiration. Ideal for use during colonoscopy, EUS, EGD, ERCP, TIF, and many similar procedures.

- Maximized Patient Comfort and Safety
- Ergonomic Support in Multiple Positions
- Available in a Variety of Styles
- Radiology Compatible
- Durable, Reusable, Latex-Free Vinyl Coating



Maintains Elevation and Alignment



Ergonomic Support



Versatile Positioning

**EPS-30**

Standard | Item 69651



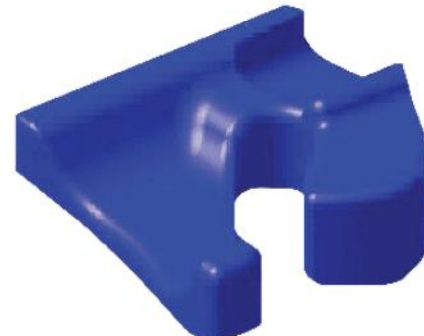
**EPS-30<sup>MP</sup>**

Mid Profile | Item 69151-MP



**EPS-30<sup>LP</sup>**

Low Profile | Item 69151-LP



**NEW**

**EPS-30 4U!**

Vortek Surgical is pleased to introduce the all new, customizable EPS-30-4U line of Endoscopy Patient Positioners. Now you can select your preferred combination of profile height and headrest configuration to best meet the needs of your patients and physicians.

- Promotes Patient Comfort and Safety
- Versatile use in Lateral, Supine and Prone Positioning
- Maintains Airway Alignment
- Durable, Reusable, Latex-Free Vinyl Coating



EPS-30 LP with Flat Headrest



EPS-30 LP with Beveled Headrest



EPS-30 MP with Standard Headrest

**Customize the EPS-30 Endoscopy Positioner to fit your needs ... in 3 simple steps:**

**STEP 1: Select your Profile Size**



Standard Profile



Mid Profile



Low Profile

**STEP 2: Select your Headrest Type**



Standard Headrest



Flat Headrest



Beveled Headrest

**STEP 3: Order your Customized EPS-30**

Contact Vortek Surgical to order your customized EPS-30 Endoscopy Positioner. Orders can be placed by phone, fax or email via [sales@vorteksurgical.com](mailto:sales@vorteksurgical.com)

